







TURN KEY HOME

MODERN LIVING AT AFFORDABLE PRICES

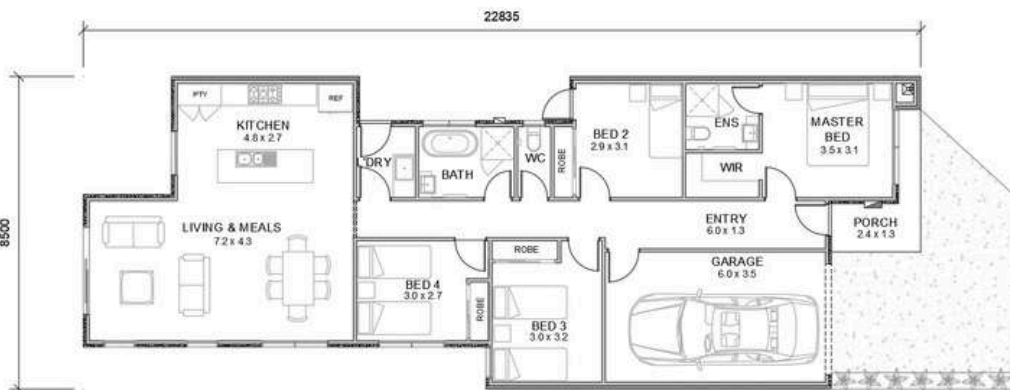
FLOOR PLAN	ELANA 17
FACADE	EDEN
HOUSE SIZE	16.99SQ
LAND SIZE	238M2

LOT 226 PITCHSTONE CIRCUIT EPPING VIC 3076

\$769,000*

 4
  2
  1
  1

BED BATH GARAGE LIVING



OVERVIEW

Enjoy expansive modern living with 4 bedrooms, 2 bathrooms, and seamless flow into the alfresco area, complemented by a stylish open-plan living space.

Complemented by a timeless façade and a variety of design options to choose from, you'll find the perfect style to suit your taste.

Terms and Conditions:

House & Land Packages price is based on standard inclusions, standard floor plans and standard façade. Photographic render is conceptual and may depict fixtures, finishes, and features not supplied/included by L.V.D GROUP PTY LTD. Excluded items include but are not limited to landscaping items such as planter boxes, retaining walls, water features, pergolas, screens, driveways, and decorative items such as fencing and outdoor kitchens or barbeques. Package may be subject to developer's design review panel, council final approval and L.V.D GROUP PTY LTDs' procedure of purchase. Package price excludes stamp duty on land, legal fees, and conveyancing costs (including transfer of title and searches.) Prices are inclusive of GST and may change without notice. Package is subject to two separated contracts. This design and illustration remain the property of L.V.D GROUP PTY LTD and may not be reproduced in whole or in part without written consent. Please contact for more information.